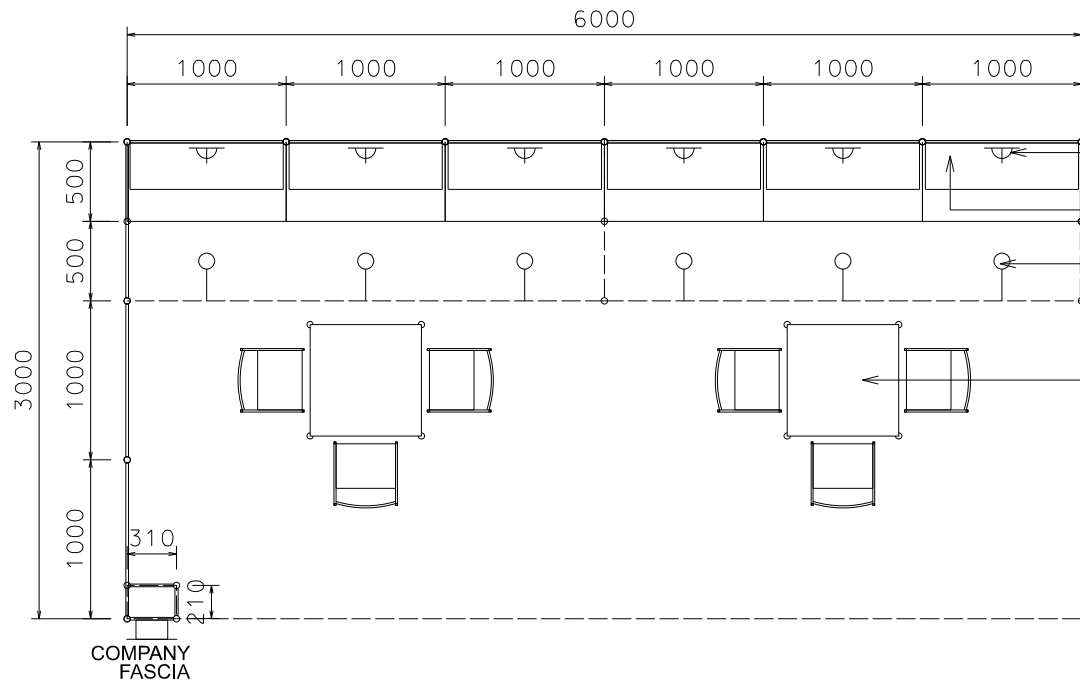


# HK International Outdoor and Tech Light Expo

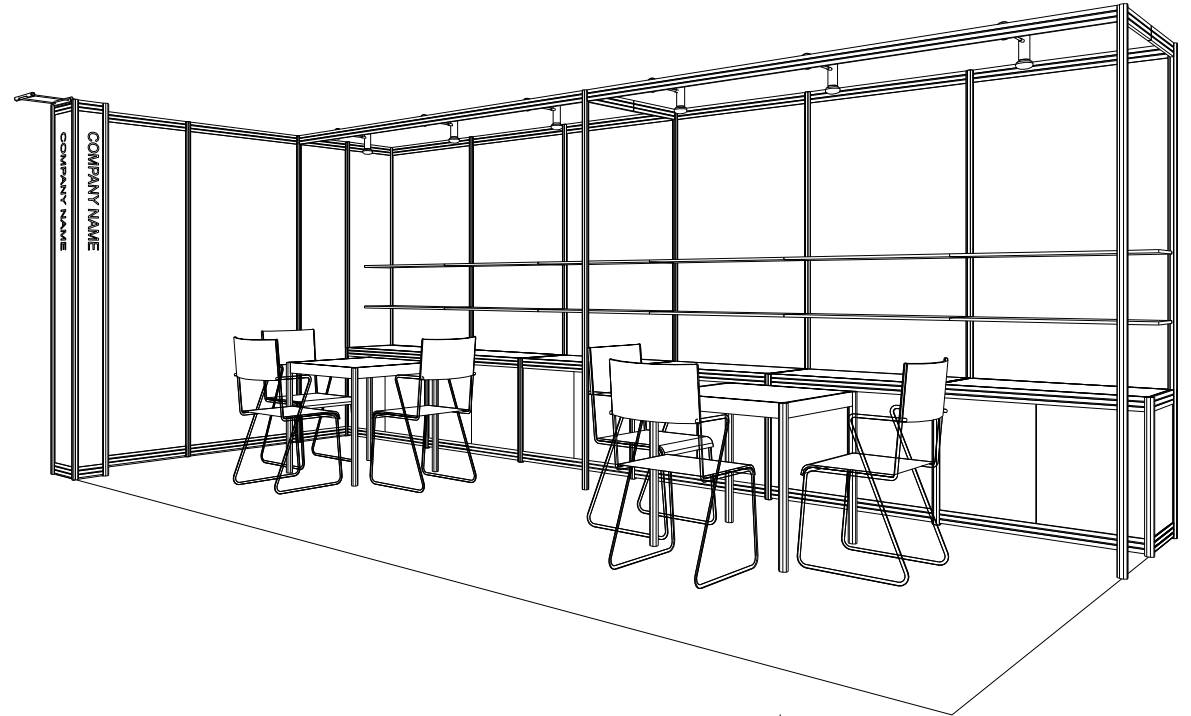
## 18sqm Right Corner Booth (Option C)

十八平方米右邊角位攤位 (建議 C)



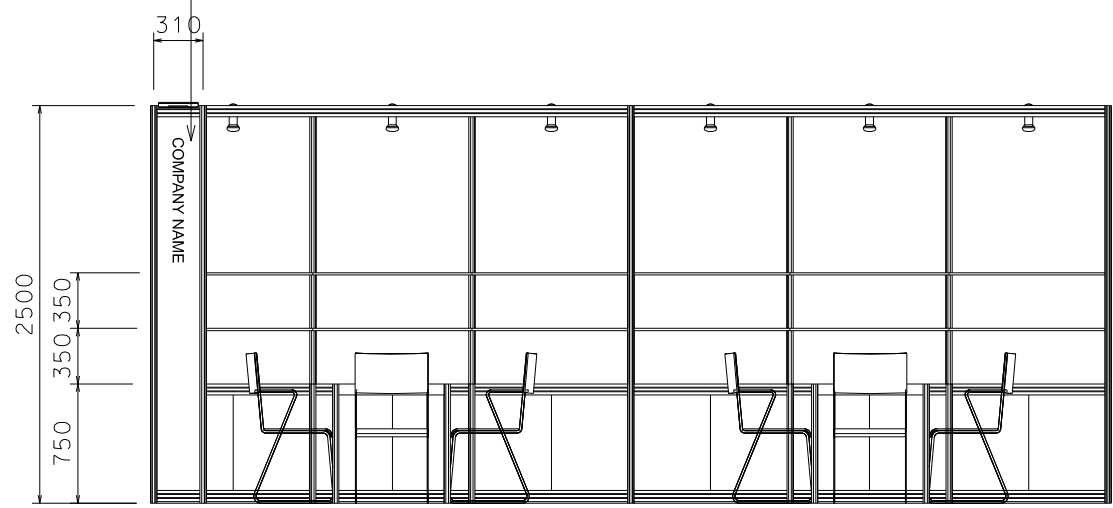
- 800W POWER OUTLET
- 2 LAYERS OF DISPLAY SHELF W/ LOCKABLE CABINET
- 13W LED LAMP LONGARMED SPOTLIGHT (YELLOW LIGHT)
- 700 x 700 x 750 MEETING TABLE W/ 3 CHAIRS

PLAN



PERSPECTIVE

FASCIA ON FOREX PANEL



ELEVATION

BOOTH SPECIFICATIONS		QTY.
	1000W x 500D x 750H LOCKABLE CABINET	6
	3000W x 300D WOODEN DISPLAY SHELF	4
	700W x 700D x 750H MEETING TABLE	2
	BLACK LEATHER CHAIR	6
	GILBERT LAMP	1
	13W LED LAMP LONGARMED SPOTLIGHT (YELLOW LIGHT)	6
	800W SOCKET	6
	H70mm CEILING BEAM	6M
	RUBBISH BIN & CARPET (18sqm.)	

\*The Hong Kong Trade Development Council reserves the right to change the configuration if necessary.  
 \*如有需要，香港貿易發展局有權更改攤位結構。