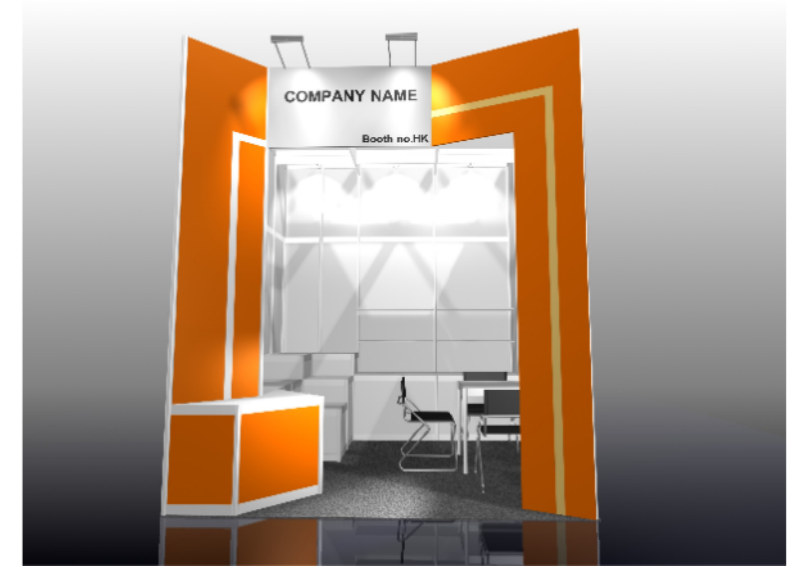
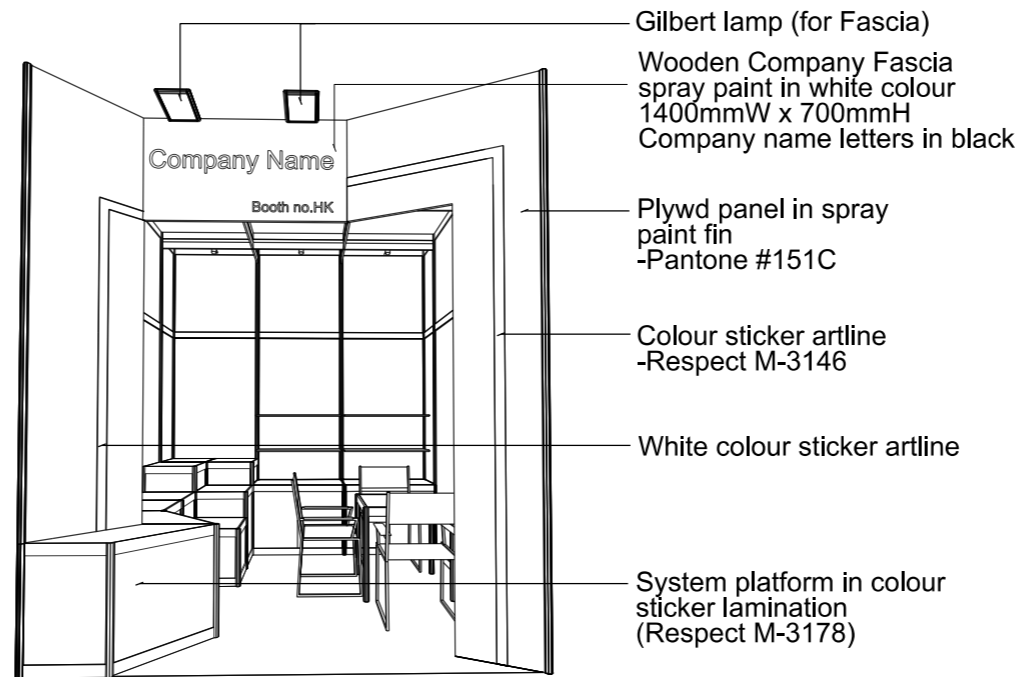
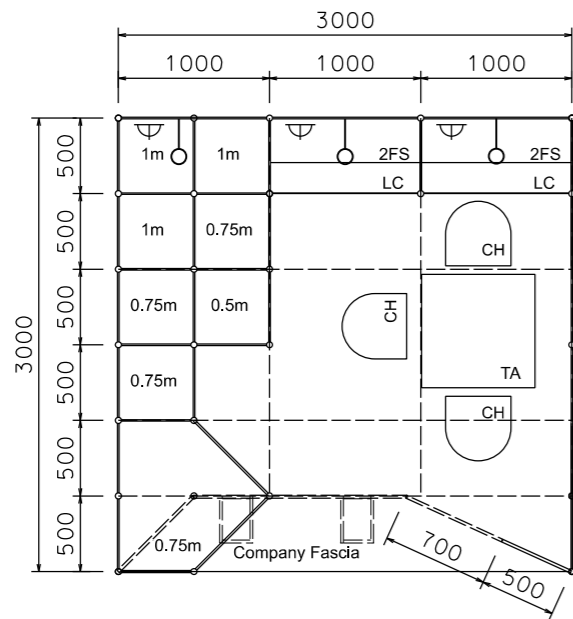


Premium Booth 3mW x 3mD One Side Open

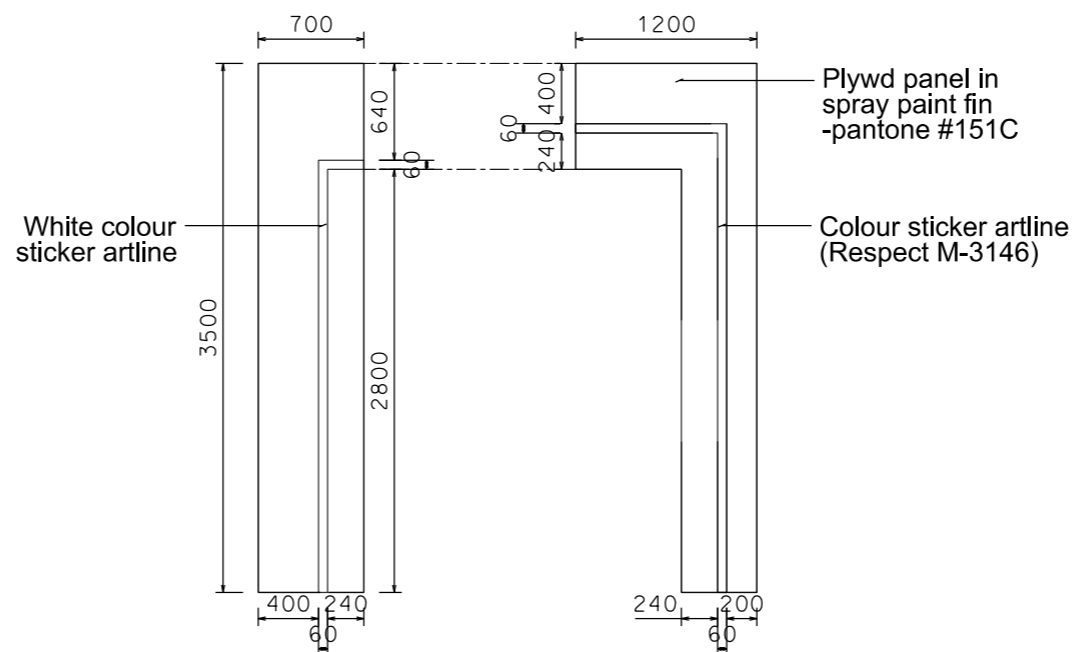
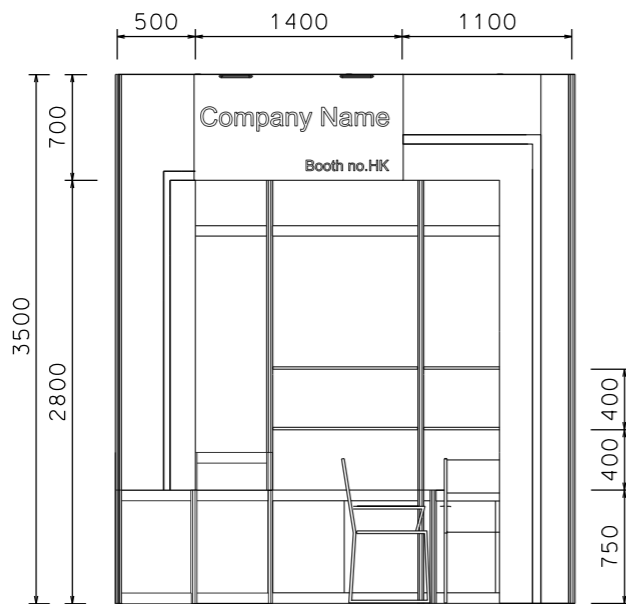
LT-C-9
3mW x 3mD x 3.5mH



COLOUR PERSPECTIVE N.T.S

PLAN

PERSPECTIVE N.T.S



FRONT ELEVATION

FASCIA ELEVATION

BOOTH SPECIFICATION		QTY
	Lockable cabinet (1mL x 0.5mD x 0.75mH)	2
	Wooden shelf (flat) (1mL x 0.3mD)	4
	1mH podium (0.5m x 0.5m x 1mH)	3
	0.75mH podium (0.5m x 0.5m x 0.75mH)	3
	0.5mH podium (0.5m x 0.5m x 0.5mH)	1
	0.75mH podium in colour sticker lamination (Respect M-3178)	1
	Square meeting table (0.7m X 0.7m x 0.75mH)	1
	Black leather chair	3
	Longarmed spotlight w/13 watt LED lamp (yellow) set at 3.5mH	3
	800w Square pin power socket	3
	150W Gilbert lamp (for fascia)	2
	Ceiling grid (175mmH) set at 3.5mH	14m

NOTES UNLESS OTHERWISE SPEBIFIED ALL DIMENSIONS ARE IN MM.

.....
.....
.....

.....
.....
.....

REVISION
02/09/2009
02/10/2009
09/10/2009
22/12/2009
28/12/2009
29/05/2015
29/07/2019

DATE: 29-07-2019
SBAL: 1 : 50 (A3)
DRAWN BY: ..
CHECKED BY:

TITLE
Premium Booth LT-C-9

PROJEKT
PREMIUM BOOTH 3m x 3m
DATE: XXXXXXXX

SHEET
LT-C01