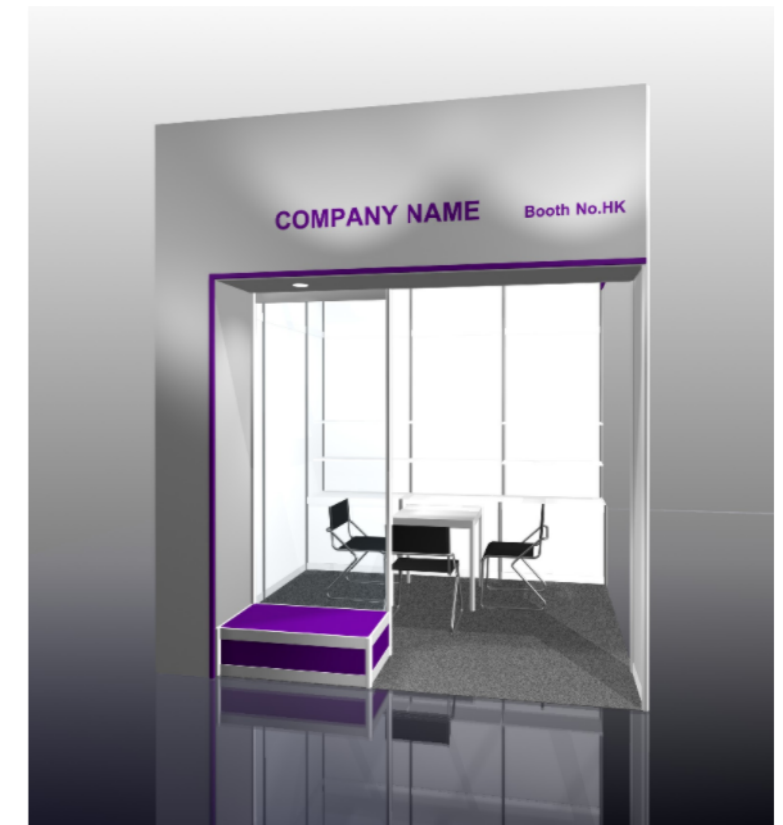
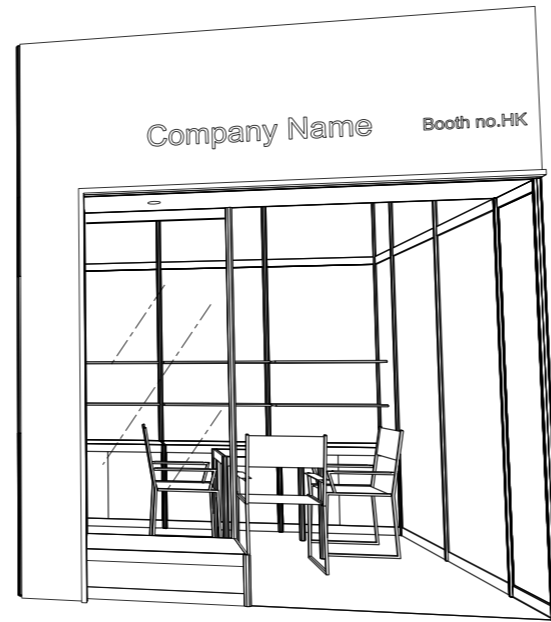
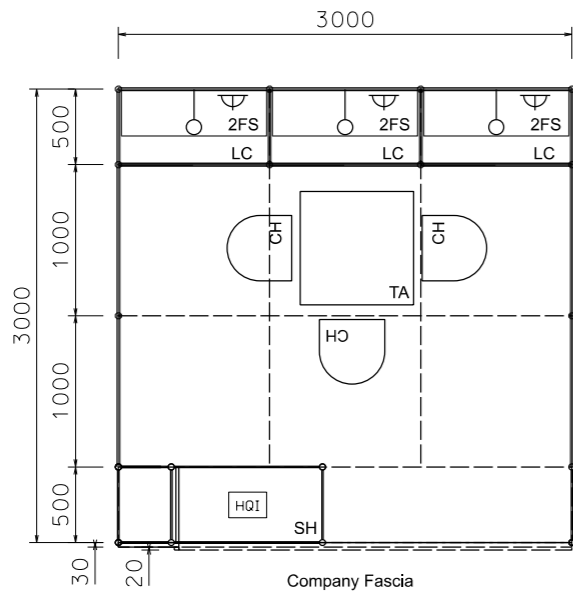


Premium Booth 3mW x 3mD One Side Open

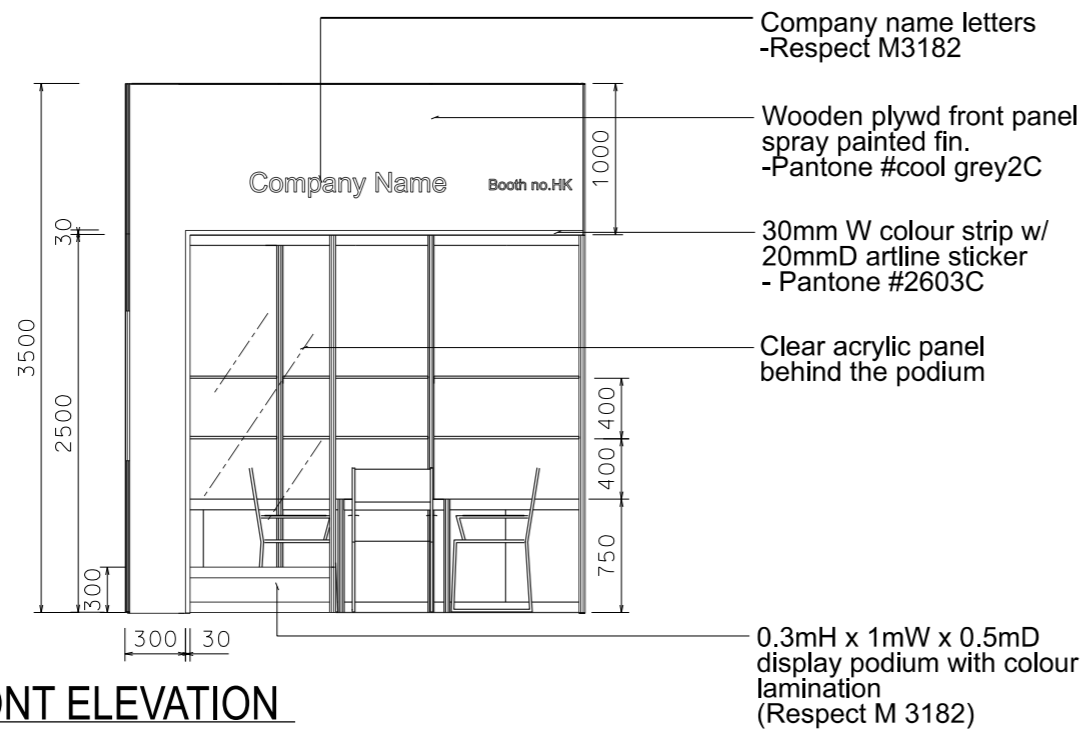
LT-B-9
3mW x 3mD x 3.5mH



PLAN

PERSPECTIVE N.T.S

COLOUR PERSPECTIVE N.T.S



FRONT ELEVATION

BOOTH SPECIFICATION		QTY
	Front display podium (1mW x 0.3mH) with clear acrylic back panel in colour sticker lamination w/. 1 x HQI white light	1
	Lockable cabinet (1mL x 0.5mD x 0.75mH)	3
	Wooden shelf (flat) (1mL x 0.3mD)	6
	Square meeting table (0.7m X0.7m x 0.75mH)	1
	Black leather chair	3
	Longarmed spotlight w/13 watt LED lamp (yellow) set at 3.5mH	3
	800w Square pin power socket	3
	Ceiling grid (175mmH) set at 3.5mH	14m

FILE PATH - L:\Local Fair Premium Booth 2011\LT\13W Lamp\LT-B layout\LT-B-2d.layout_update.dgn



NOTES UNLESS OTHERWISE SPECIFIED ALL DIMENSIONS ARE IN MM.

.....
.....
.....

REVISION
02/09/2009
23/09/2009
02/10/2009
22/12/2009
28/12/2009
13/04/2011
23/10/2013
18/07/2014
12-07-2019

DATE:	12-07-2019
SCALE:	1 : 50 (A3)
DRAWN BY:	..
CHECKED BY:

TITLE	Premium Booth LT-B-9
-------	----------------------

PROJECT	PREMIUM BOOTH 3m x 3m
DATE:	XXXXXXXX

SHEET	LTB01
-------	-------