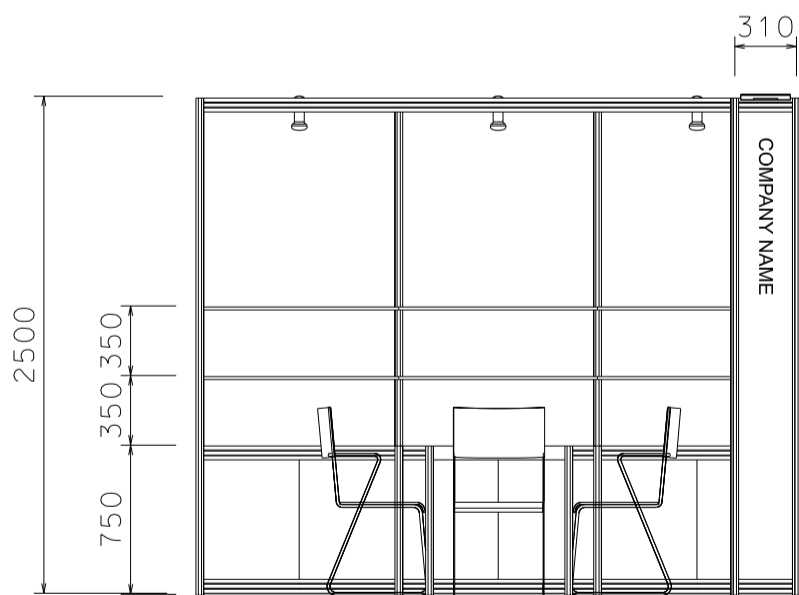
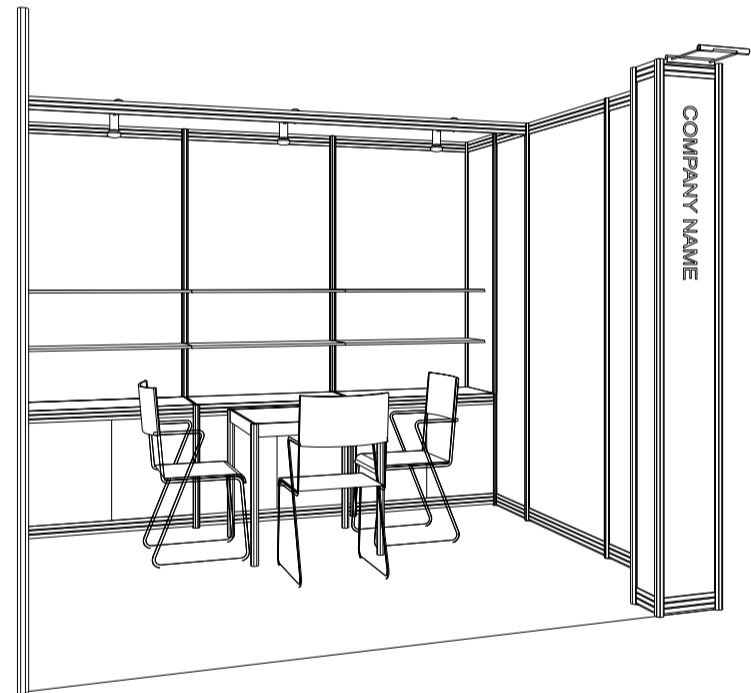
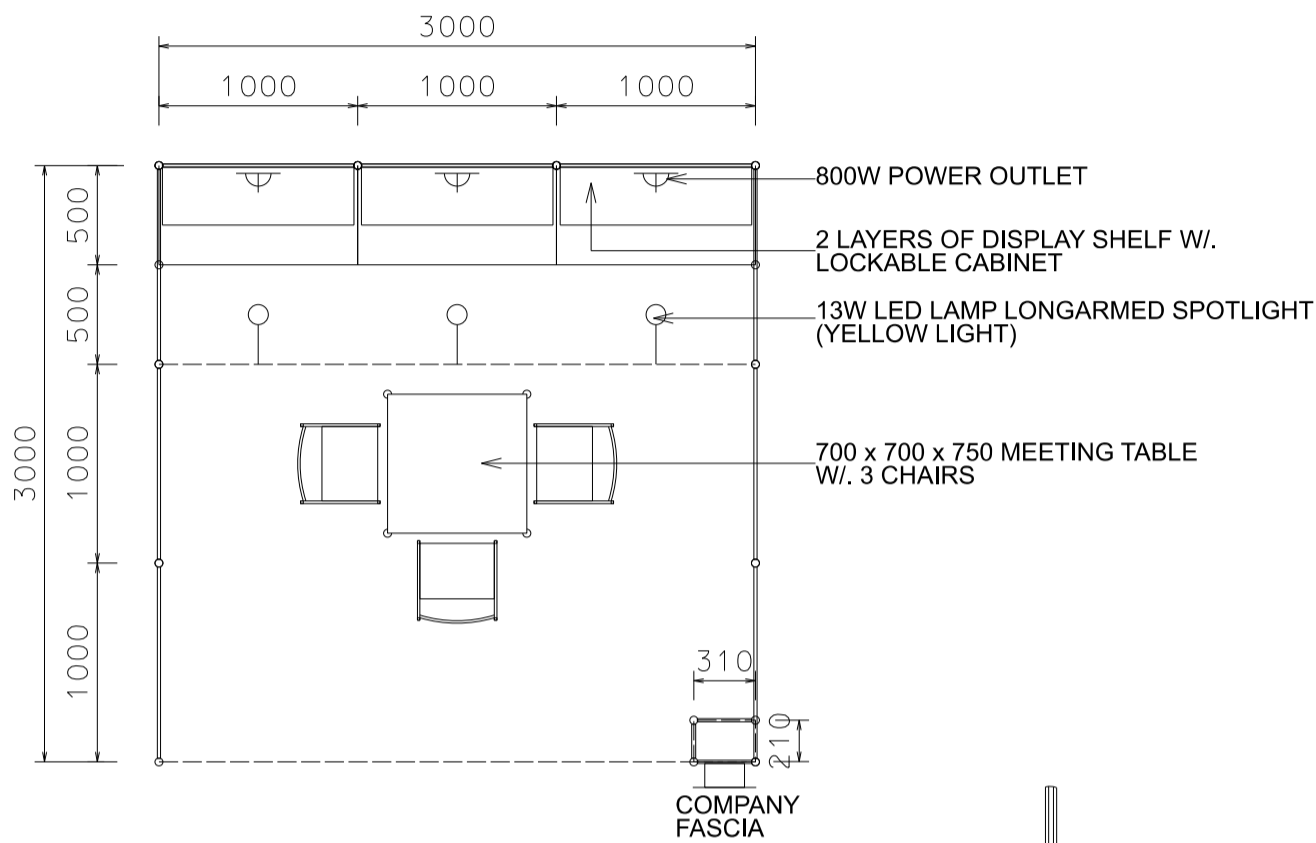


HK International Outdoor and Tech Light Expo

9 sqm. Standard Booth (Option C)

九平方米標準攤位 (建議 C)



BOOTH SPECIFICATIONS		QTY.
	1000W x 500D x 750H LOCKABLE CABINET	3
	3000W x 300D WOODEN DISPLAY SHELF	2
	700W x 700D x 750H MEETING TABLE	1
	BLACK LEATHER CHAIR	3
	GILBERT LAMP	1
	13W LED LAMP LONGARMED SPOTLIGHT (YELLOW LIGHT)	3
	800W SOCKET	3
	H70mm CEILING BEAM	3M
	RUBBISH BIN & CARPET (9sqm.)	

*The Hong Kong Trade Development Council reserves the right to change the configuration if necessary.

*如有需要，香港貿易發展局有權更改攤位結構。